

Frontier Sno Riders

# Frontier Times



Volume 7, Issue 3

November 2010

## Winter 1970-71 Repeating?

For those of us hoping for a snowy winter, the forecasts are looking promising.

If one were to look only at the El Nino/La Nina forecast model, the northeast should be in for a cold and snowy winter.

To reflect back on a memorable La Nina winter, look no further than the winter of 1970-71 it was a record setting winter in many areas of the country. Here are what others had to say about that winter.

Burlington, VT had 96.9 inches fall during the winter of 1970-71. ([http://www.noaa.gov/stories2008/20080313\\_coollest.html](http://www.noaa.gov/stories2008/20080313_coollest.html))

South Burlington, VT had accumulated 86 inches through Feb. 13 in the winter of 1970-71. By the time spring, 1971 rolled around, it became by far the snowiest winter on record, with 145.4 inches of snow. That came largely on the strength of some hefty late February and March snowfalls. The winter of 1970-71 was also quite cold, so all that snow was really able to pile up. After a huge snowstorm on March 7, 1971, the snow was 88 inches deep (more than seven feet!) in Orange and 70 inches at the Knapp Airport in Berlin, according to David Ludlum's Vermont Weather Book. (<http://blogs.burlingtonfreepress.com/weather/author/msutkoski/>)



In snowbelt buckle Chardon, OH, they eclipsed 135 inches for the season. (<http://www.weather.com/>)

Albany, NY measured 112.5 inches, the most ever recorded for a winter season there. On March 3-5, 1971 14.8 inches fell to top off the snowy season. (Nation Weather Service, Albany)

Rainier Park Ranger Station in Washington (elevation 5,427 feet) recorded seasonal snowfall total to 1,027 inches to set a new record for the U.S. (<http://www.examiner.com/weather-history-in-national/weather-history-june-1-record-heat-uv-wildfires-severe-storms-tornadoes-wind-floods-snow?render=print>)

A total of 317 inches fell in 1970-71 at Mt. Mansfield, Stowe, VT. (John Zicconi, *Stowe Reporter*, 4/5/01)

The all-time record in Ottawa, ON of about 175 inches in the winter of 1970-71 occurred. There were 12 snow days in a small town outside Canada's capital. (<http://thelede.blogs.nytimes.com/2009/01/28/winter-ice-storm-creates-havoc/>)

Club Meeting November  
10th, Maple Inn, East Berne.  
7pm

Much of interior Alaska experienced severe winters with deep snow in 1970-71 and 1971-72, resulting in sharp declines in many

(continued on page 4)

### *Inside This Issue:*

Calendar of Events page 2

Club News page 3

Trail Log page 3

Ski Doo \$\$ program page 7

Clubmember Benefits page 5

Party Goers page 6

NYSSA News page 7

### *Connections*

Frontier Sno Riders  
PO Box 133  
Duanesburg, NY 12056

Pres Joel Church  
V.P. Ron Shultes  
Tres. Randy Stein  
Sec. Rich Egan

Newsletter Editor  
Joel Church  
E-mail:  
[cato79@peoplepc.com](mailto:cato79@peoplepc.com)

On the web at:  
[www.frontiersno.com](http://www.frontiersno.com)



# November 2010

Sun	Mon	Tue	Wed	Thu	Fri	Sat
	1	2 Election Day	3	4	5	6 Grass drags, Schaghticoke
7	8	9	10 Club Meeting- 7pm Maple Inn	11 Veterans Day	12	13 Swap meet, Oak Hill
14	15	16	17 BOD Meeting- 7pm TBA	18	19	20 Deer season southern zone opens
21	22	23	24	25 Thanksgiving Day	26	27
28	29	30				

# December 2010

Sun	Mon	Tue	Wed	Thu	Fri	Sat
			1	2	3	4
5	6	7	8 Club Meeting- 7pm Elk's Club	9	10	11
12 Deer season southern zone ends	13	14	15 BOD Meeting- 7pm TBA	16	17	18
19	20	21 First Day of Winter. Late bow hunting end	22	23	24	25 Christmas Day
26	27	28	29	30	31 New Year's Eve	

## GENERAL CARPENTRY

### Home Improvements

- Pole Barns • Sheds • Decks • Roofs
- Structural Repairs of Buildings, etc. • Back Hoe Work

— FREE ESTIMATES —

Duncan W. Schanz  
Knox, NY

518-872-7046

# Advanced Property Management

SERVING SCHENECTADY, MONTGOMERY  
SCHOHARIE & SURROUNDING COUNTIES

John Janke  
Broker/Owner

P: 518-355-1145  
C: 518-265-0886

## Club News and More

The Northern Star Riders Snowmobile Club is co-hosting a swap meet and vintage snowmobile display on November 13, 2010 at Oak Hill/Durham Firehouse on Greene Co Rd 22, between Rt 81 and Rt 145. Spectators welcome, no admission fee. More info contact ButchBear (518-966-8628) or butchbearjr@aol.com

Feds OK sale of gas with more ethanol a mixture of up to 15%, but only recommended for cars and light trucks built since 2007. Motorists with older vehicles will need to watch what they're pumping or risk damaging their engines. The ethanol industry says it is safe yet the EPA is more cautious.

Opponents argue that ethanol used in smaller engines, lawn mowers, boats, snowmobiles, are not designed for the higher concentration.

There will be no Duanesburg Adopt A Highway cleanup this fall due to no volunteers. If you do not help your club, expect to see more events coming up missing. Next on the block, snowmobile safety classes...only you can help turn this around.

## Trail Log

East Berne - Widening and clearing continues on S70 plus a new bridge project.

Knox - New club trail being worked on towards Township.

Esperance - C7E towards Delanson to be widened in narrow spots. Cooley Heights to be brushed and cleared.

Duanesburg/Delanson - Look for some changes coming to the steep hill section of C7B near the Rt7 crossing.

Burtonsville - Bridge projects are being coordinated with the DEC in the state forest.

Mariaville - Trail work continues on the reroute just north

Super Raffle tickets should hopefully be available at the November Club meeting in East Berne. Half the funds go directly to the Club, so be sure to sell as many as you can. Tickets are only \$5 each, lots of prizes and easy to sell.



Mike Dunigan cutting brush on S70 near Joslyn School Road.

2395 State Route 7  
Cobleskill, NY 12043  
518.234.8300

**COBLESKILL**  
POWER PRODUCTS, LLC

www.cobleskillpowerproducts.com  
cobleskillpowerproducts@yahoo.com

SALES • SERVICE • PARTS • APPAREL • PERFORMANCE

Sub-Zero EXPLORER Club Car YANMAR Kawasaki TROY-BILT KYMCO Premier

Since 1984

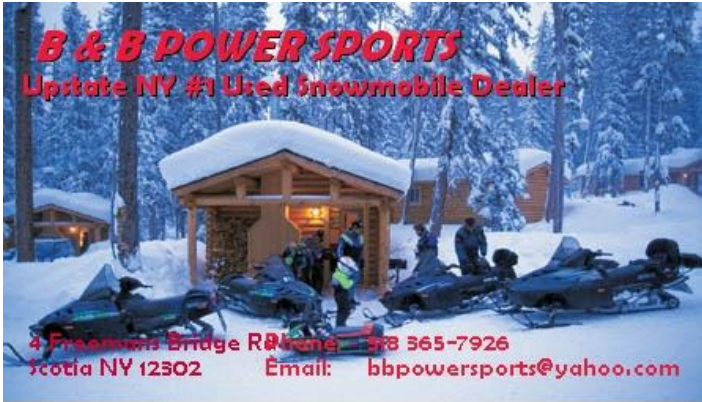


**Scott's Printing Company**  
(518) 895-2752

*Commercial Printing • Business Cards  
Typesetting • Rubber Stamps • Tickets  
Wedding & Social Stationery*

5539 Western Turnpike  
Duanesburg, New York 12056

Scott Rowley  
Owner



**B & B POWER SPORTS**  
Update NY #1 Used Snowmobile Dealer

4 Freeman's Bridge Rd  
Scotia NY 12302

378 365-7926  
Email: bbpowersports@yahoo.com

(continued from page 1 - Winter Repeat?) moose populations. ([http://www.wildlife.alaska.gov/index.cfm?adfg=wolf.wolf\\_mgt](http://www.wildlife.alaska.gov/index.cfm?adfg=wolf.wolf_mgt))

Finally, for just the second time since 1891 in Seattle, WA there was over an inch of snow in each of the winter months -- December, January, February and March. The only other time that has happened was in 1895-96. (<http://www.komonews.com/news/42268597.html>)

Overall the winter was record setting to say the least. Are we headed for the same? Let us take a look at the forecast, El Nino/La Nina style.

Year	DJF	JFM	FMA	MAM	AMJ	MJJ	JJA	JAS	ASO	SON	OND	NDJ
1970	0.5	0.3	0.2	0.1	0.0	-0.3	-0.6	-0.8	-0.9	-0.8	-0.9	-1.1
1971	-1.3	-1.3	-1.1	-0.9	-0.8	-0.8	-0.8	-0.8	-0.8	-0.9	-1.0	-0.9
2010	1.7	1.5	1.2	0.8	0.3	-0.2	-0.6	-1.0				

([http://www.cpc.noaa.gov/products/analysis\\_monitoring/ensostuff/ensoyears.shtml](http://www.cpc.noaa.gov/products/analysis_monitoring/ensostuff/ensoyears.shtml))

The above chart shows the winter season of 1970-71 and compares with the beginning of the 2010-11 season. You can easily see that from May onward the numbers are very close. The more negative the numbers, the stronger La Nina will be this winter. Positive numbers represent El Nino and numbers very close to zero are for neutral conditions. The trend so far is for La Nina.

What this simply means is fall of 2010 looks a lot like the fall of 1970. Will this mean winter 2010-11 will be exactly like 1970-71? Most likely not, however it could be similar based on this current trend that the chart shows.

AccuWeather Chief Long-Range Forecaster Joe Bastardi is the one forecasting the harsh winter for the Great Lakes, but also in parts of the Northwest to New England. He also sees "an early winter for the Northeast, a wintry mess for the mid-Atlantic and Midwest and abnormally warm, dry conditions from Southern California to the Carolinas." Bastardi says that La Nina will be "the main player governing" winter weather in the U.S. He said La Nina winters are "typically synonymous with harsh conditions across the northern tier of the United States and drier-than-normal conditions throughout the southern tier."

He also says this: "A quick start to winter in the East may have people concerned about another snowmageddon, but we expect that much of the season's snow will come relatively early in the season."

The Weather Channel's Bruce Rose, principal scientist/vice president and a Northeast Ohio native, volunteered a more specific and scary picture. Rose said "if you believe in analogs of past La Ninas, this coming winter is setting up similar to one in 1970-71".

Whether the winter presents like this or not, you should be preparing your snowmobiles, renewing your club membership, and registering your snowmobiles early. Do not wait for it to snow or you may miss it, you've been warned!




Do you remember the winter of 1970-71?

**Jonathan's**  
 Pizza & Italian Cuisine

Vincent & Tamara Sigond

5055 Western Turnpike  
 Duaneburg, NY 12056  
 (518) 895-8234

**Urban Fuel Oil, Inc.**



PO Box 490  
 Delanson, NY 12053  
 (518) 895-2441

*"Fast and Friendly Service."*

**Support Your Club —  
 Merchandise Available**

The Club is now selling baseball caps with the Club's logo on it. Come in 5 colors; Black, Navy, Royal, Red & Camo. Each sells for \$13. Sweatshirts sell for \$20, knit caps (navy or black) sell for \$12. All available at Club meetings. Get'em quick!




**Mariaville Lake  
 Bed & Breakfast**

176 Batter St.  
 Pattersonville, NY 12137  
 518-864-5252  
[www.mariavillelakebb.com](http://www.mariavillelakebb.com)

**Members Only Benefit Offered By  
 Valley View Realty**

Valley View Realty/ Advanced Property Management is offering to club member customers the following: Buy or sell your home or property through Valley View Realty and choose one of the following offers:

1) Upon closing receive 5 years worth of membership dues to Frontier Sno Riders, Frontier Sno Rider sweatshirts (your choice of style) for your family (up to six) and a donation to Frontier Sno Riders of \$150.00

Or  
 2) Upon closing, Valley View Realty will make a donation to Frontier Sno Riders in the amount of \$450.00



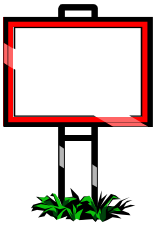
John Janke P:518-355-1145 C:518-265-0886

**Advertising Opportunities**

Do you have a business that you'd like to promote? Then, advertise with us!

- (\$35 fee) - 1 year subscription (8 issues)- Business Card ad posted in monthly Club Newsletter & same Business Card ad posted on Club website.
- (\$50 fee) - Your ad posted on Club kiosk on the trail. Great visibility for riders to see and find your business!

For more information on how to take out an ad through the Club, check out the "Sponsor" section of our website at [www.frontiersno.com](http://www.frontiersno.com) or contact the newsletter editor at [cato79@peoplepc.com](mailto:cato79@peoplepc.com)  
 Let us help you advertise your business!





### Elma's Tax Service LLC

**Elma M Phillips**  
Enrolled Agent, ATA, MBA

795 Pattersonville Rd  
Pattersonville NY 12137  
Phone 518-887-5740

Fax 518-887-5742  
E-mail [taxlady@ptconnect.net](mailto:taxlady@ptconnect.net)  
Cell 518-378-8416  
[www.elmastax.com](http://www.elmastax.com)

KARL L. PRITCHARD  
Owner

### PRITCHARD ENTERPRIZES

Used Car Sales - Towing - Repair

159 Knox Gallupville Road  
Berne, New York 12023  
Phone: (518) 872-0111  
Cellular 424-1413

## Party Goers

### Work party logs

October 2+3 2010 C7B between Benninger and Westfall Roads:

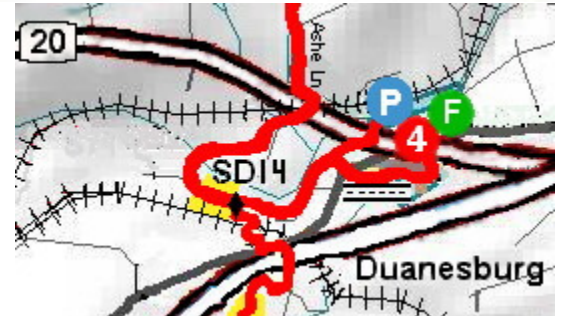
Joel Church  
Matthew Church  
Christian Church



C7E Rt7 to Cole Rd

October 16 2010 C7B near Duanesburg and Route 20

Joel Church  
Matthew Church  
Christian Church  
Bob Lamp



C7B Mott Rd and above I-88

*Trails with yellow sides are where work is on going.*

October 17 2010 S70 near Joslyn School Rd:

Brian Buchardt  
Mike Dunigan  
Joel Church  
Matthew Church  
Christian Church



October 23 2010 C7B near Rt159-Mariaville:

Jerry Schoening  
Matt Harper  
Mark Novak  
Nate Rein

October 24 2010 Club Trail to Township:

Ron Shultes  
Brian Buchardt  
Kenny  
Skip  
Chad



S70 near Rt443 and Brookhaven Rd

RENSELAER COUNTY SNOW RIDERS  
PRESENT

## TEARIN' UP THE TURF

MIKE ZAGORSKI  
518.852.8341



JOHN HERKERT  
518.378.3525

SNOWMOBILE GRASS DRAGS, SWAP MEET,  
& VINTAGE SHOW

NOVEMBER 6, 2010 - RAIN DATE NOV. 7TH - SCHAGHTICOKE FAIR GROUNDS  
SCHAGHTICOKE, NY 12154 - 25 MINS NORTHEAST OF ALBANY

### PRO, TRAIL, & VINTAGE CLASSES

\$20 PER CLASS - 50% PAYBACK ON TRAIL CLASSES

100% PAYBACK ON PRO CLASSES

100% PAYBACK ON TURF SURFER CLASS

500' TRACK - 750' SHUT DOWN - CLAY STARTING LINE

VINTAGE SHOW TROPHIES - TEK VESTS AVAILABLE FOR RACER USE

GATES 8 AM

REGISTRATION 8 AM - 10 AM

TEC INSPECTION 8 AM - 10 AM

DRIVERS MEETING 10:30 AM

RACING 10:45 AM

GATE ENTRY \$7

**\$5 PREPURCHASE OR W/FLYER**

UNDER 12 FREE

(FLYER GOOD FOR 4 ADMISSIONS)

FOR MORE INFO VISIT OUR WEBSITE

[WWW.RC-SNOW-RIDERS.COM](http://www.rc-snow-riders.com)

<http://www.rc-snow-riders.com/RCSR-GrassDrags.htm>

## Notice:

Want Your Ad to Appear Here?  
Contact the editor at [cato79@peoplepc.com](mailto:cato79@peoplepc.com)

Cost is only \$35 per season. Now is the time to get your business noticed, especially if it is located near the trail. What are you waiting for?

## VALLEY VIEW REALTY

Residential-Commercial-Investment-Acreage

Registered HUD Broker

Representing both Buyers & Sellers

**John Janke**

Assoc. Broker

Phil King - Broker

1006 Argo Blvd.

Schenectady, NY 12303

Phone/Fax: 518-355-1145

Cell: 518-265-0886

[www.valleyviewrealty.com](http://www.valleyviewrealty.com)

### NYSSA NEWS

## Back woods road open in time for hunting season.

As reported in the Schenectady Gazette by Stephen Williams, four roads that were closed earlier this year due to budget cuts have been reopened.

Pete Grannis thanked local governments and other partners for doing the repair work and needed maintenance. He was fired as DEC Commissioner the next day for comments he made regarding the reduction in staff and loss of funding for the DEC.

Of note, the South Warren Snowmobile Club covered the cost of several new culverts on Gay Pond Road in the Hudson River Recreation Area in Warrensburg allowing the road to reopen.

The other roads reopened are Lily Pond Road in the Lake George Wild Forest, the Indian Lake Road and Otter Brook Road in the Moose River Plains. The latter two are used as snowmobile trails in the winter.

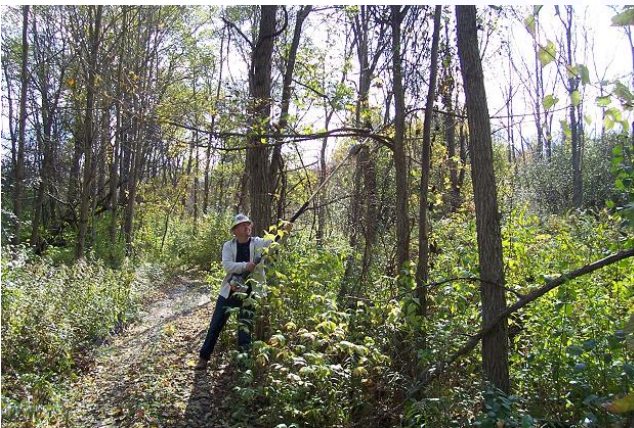
Big game hunting started on Saturday October 23 in the northern zone of New York State.



Ski-Doo Million Dollar Club Support program is back again this year.

BPR and its dealers are proud to support the sport by giving your club the opportunity to raise funds for trail operations. Simply fill out a coupon at your local BRP dealership before **November 15, 2010**. Your dealer and BRP will then donate \$10 cash to your snowmobile club. Easy as that. So grab a pen and fill out your coupon. Together we can make the Ski-Doo Million Dollar Club Support program a huge success.

This is a great way for club members to help the club raise needed funds. No purchase is required, just be sure when you visit a Ski-Doo dealership to ask for and fill out a coupon for entry in the program. You can only enter once. Remember to put in **Frontier Sno Riders** as your club!



Brian Buchardt uses the polesaw to cut overhanging tree limbs on S70 trail.

A yellow advertisement for Mariaville Motorsports. At the top, the name 'MARIAVILLE MOTORSPORTS' is written in large, bold, red letters with a checkered flag graphic behind it. Below the name, there are four small images: a dirt bike, a snowmobile, a lawn tractor, and a small engine. The text in the center lists 'DIRT BIKES • ATV's • SNOWMOBILES', 'LAWN TRACTORS • LAWN MOWERS', and 'SMALL ENGINES • CHAINSAWS'. Below this, it says 'all makes and models'. The address is '10346 State Hwy 30, Amsterdam, N.Y. 12010'. At the bottom, it says 'PARTS (518) 864-5576 SERVICE'.

## Trail Boss Contacts

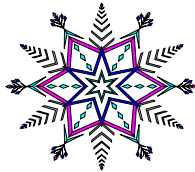
Brian Buchardt	Berne	872-1878
Ron Shultes	Knox	872-2526
Tom Rulison	Groomer & Equip	
“ “	Esperance	875-9229
Rich Valletta	Duanesburg	895-2425
Jerry Schoening	Mariaville	864-5576
John Scrima	Burtonsville	875-6078

Join a Club Wherever  
You Ride!

**Zero Alcohol**  
Your Smart Choice

## Think Snow!

Like 1970-71...



PAT DEL GIORNO  
JOHN DEL GIORNO

(518) 943-3707  
FAX (518) 943-7475

# STERLING

AWARDS - ENGRAVERS

PLAQUES - GIFTS - GENERAL MERCHANDISE

DESK SETS - BRONZE DEDICATION & MEMORIAL PLAQUES

NEON - SIGNS - FLAGS - PROMOTIONAL IDEAS

E-MAIL [sterentinc2@aol.com](mailto:sterentinc2@aol.com)  
[www.sterentsterling.com](http://www.sterentsterling.com)

342 MAIN ST. BOX 345  
CATSKILL, NY 12414

# Maple Inn

64 MAIN STREET, OFF RTE. 443,  
EAST BERNE, NY 12059

518-872-9433 | [www.mapleinn.net](http://www.mapleinn.net)

Hours: Open 7 Days • Kitchen Noon-9pm • Bar Noon-Til ?